



GAT MONTHLY MEMBERSHIP PROGRESS REPORT

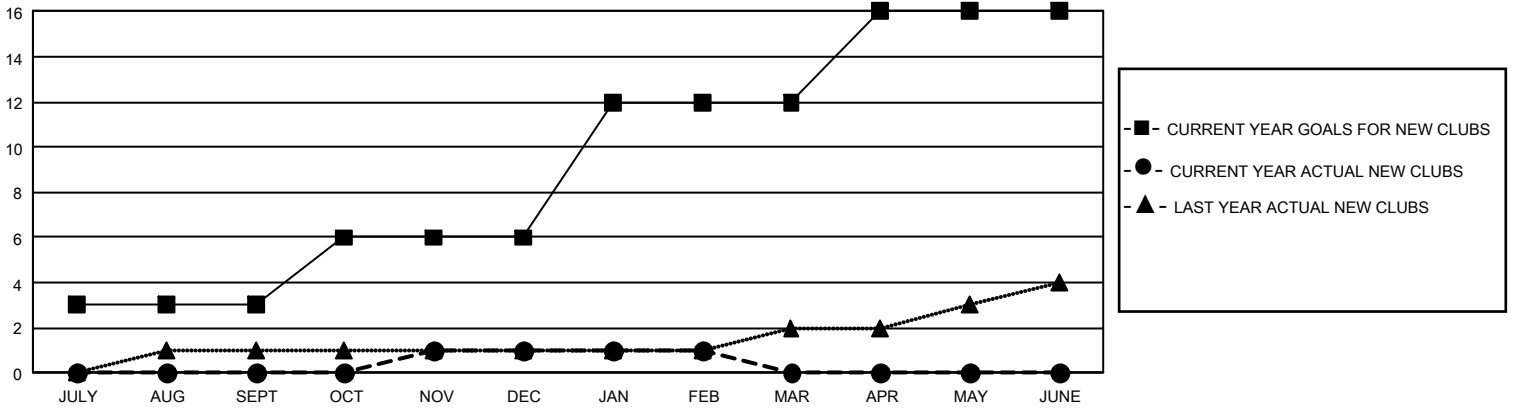
Results as of: 2/28/2022

GMT Constitutional Area 1, Group K

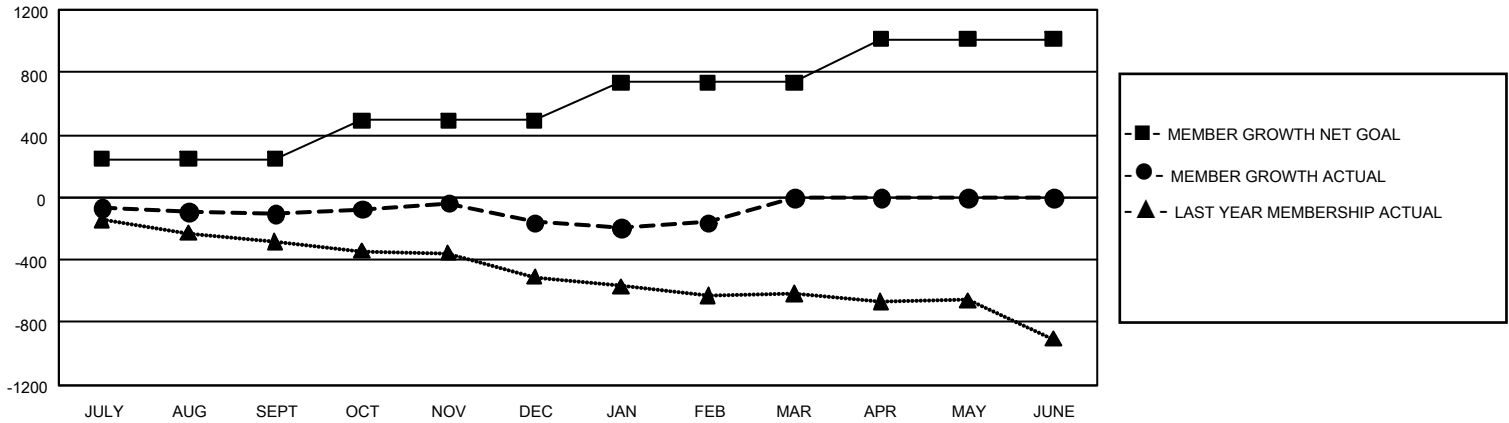
REPORT DOES NOT INCLUDE CLUBS IN UNDISTRICTED AREAS.

Clubs				Members			
RESULTS FOR 2021-2022				RESULTS FOR 2021-2022			
QUARTER	NEW CLUB GOAL	NEW CLUBS	DROPPED CLUBS	QUARTER	MEMBER GROWTH NET GOAL	MEMBER GROWTH ACTUAL	DROPPED MEMBERS ACTUAL (including transfers)
JULY/AUG/SEPT	9	0	4	JULY/AUG/SEPT	247	303	369
OCT/NOV/DEC	9	1	3	OCT/NOV/DEC	244	501	526
JAN/FEB/MAR	18	0	0	JAN/FEB/MAR	245	269	234
APR/MAY/JUNE	12	0	0	APR/MAY/JUNE	277	0	0

GOALS AND ACTUAL NEW CLUBS CUMULATIVE



GOALS AND ACTUAL MEMBERS CUMULATIVE



DROPPED CLUBS: 7	307 CLUBS OF 586 ADDED 1 OR MORE NEW MEMBERS	<u>GENDER DISTRIBUTION</u>	
		MALE 10,812 (62.75%) FEMALE 6,416 (37.24%) NON BINARY 0 (0.00%) PREFER NOT TO ANSWER 3 (0.02%)	
<u>DROPPED MEMBERS</u>		CLICK HERE FOR CUMULATIVE MEMBERSHIP DATA	TOTAL FAMILY UNIT MEMBERS 3,417
DECEASED 169 CLUB CANCELLED 46 OTHER 914 TOTAL 1,129			FAMILY MEMBERS PAYING HALF DUES 1,752